



# ISPE NORDIC, INTERNATIONAL SOCIETY FOR PHARMACEUTICAL ENGINEERING

Anders Widov  
Wiphe AB

Chair ISPE Nordic  
Secretary ISPE Critical Utilities International  
Steering Committee

# PRESENTATION CRITICAL UTILITIES



# ISPE – What are we?

- **World largest non-for-profit association**
- **Founded in 1980**
- **Independent, led by the world's top pharmaceutical professionals**
- **An inviting and neutral environment for experts, technologists, regulators, consultants, academia and students to exchange of ideas and practical experience**
- **Today 20 000 members in 90 countries**
- **ISPE Nordic was initiated 2000, Today ~800 members**

# ISPE – Vision

## ISPE CORE PURPOSE

- **To lead global change and innovation in pharmaceutical technology and processes**

## ISPE AMBITIOUS 10 YEARS GOAL

- **The Society will revitalize global public health through support of scientific innovation in the development and manufacture of affordable medicines**
  
- **→ ISPE Drug shortage initiative**

# Global Affiliates

## Asia - Pacific

- Australasia Affiliate (300)
- India Affiliate (350)
- Indonesia Affiliate (450)
- Japan Affiliate (850)
- Korea Affiliate (120)
- Malaysia Affiliate (200)
- Philippines (100)
- Singapore Affiliate (350)
- Thailand Affiliate (75)
- China Affiliate (800)

## America

- Canada Chapter (400)
- ISPE Argentina (90)
- ISPE Brazil (250)

## Europe

- Belgium Affiliate (300)
- Czech Republic/ Slovakia Affiliate (50)
- France Affiliate (250)
- DACH (Germany/Austria/Switzerland) Affiliate (1000)
- Ireland Affiliate (500)
- Italy Affiliate (350)
- Netherlands Affiliate (250)
- Nordic Affiliate (800)
- Poland Affiliate (100)
- Spain Affiliate (200)
- Turkey Affiliate (125)
- United Kingdom Affiliate (800)
  
- No affiliate (400)

## United States

- Boston Area Chapter (1800)
- Carolina-South Atlantic Chapter (1300)
- Chesapeake Bay Area Chapter (350)
- Delaware Valley Chapter (1100)
- Great Lakes Chapter (900)
- Greater Los Angeles (450)
- Midwest Chapter (500)
- New Jersey Chapter (1100)
- Puerto Rico Chapter (150)
- Rocky Mountains Chapter (350)
- San Diego (320)
- San Francisco/Bay Area Chapter (800)
- South Central Chapter (200)

# Communities of Practice (COPs)

## Purpose

- Provides forum for community members to help each other solve everyday work problems
- Develops and disseminates best practices, guidelines, and procedures, and creates breakthrough ideas, knowledge, and practices
- Organizes, manages, and researches a Body of Knowledge from which community members can draw
- 15 000 members

# ISPE – CoPs

- Connect and collaborate with professionals in your area of expertise.
- When you participate in a Community of Practice (COP), you will:
- Engage in on-line discussions with industry professionals around the world
- Access a community-specific body of knowledge
- Collaborate on documents, important resources, and content relevant to the interests of the community
- Schedule electronic chats to discuss a particular issue or challenge
- Obtain current news and learn about upcoming community activities
- Search for and find other ISPE or COP members

# Communities of Practice ISPE Nordic 2016

Critical Utilities

Biotechnology

PAT (Process Analytical Technology)

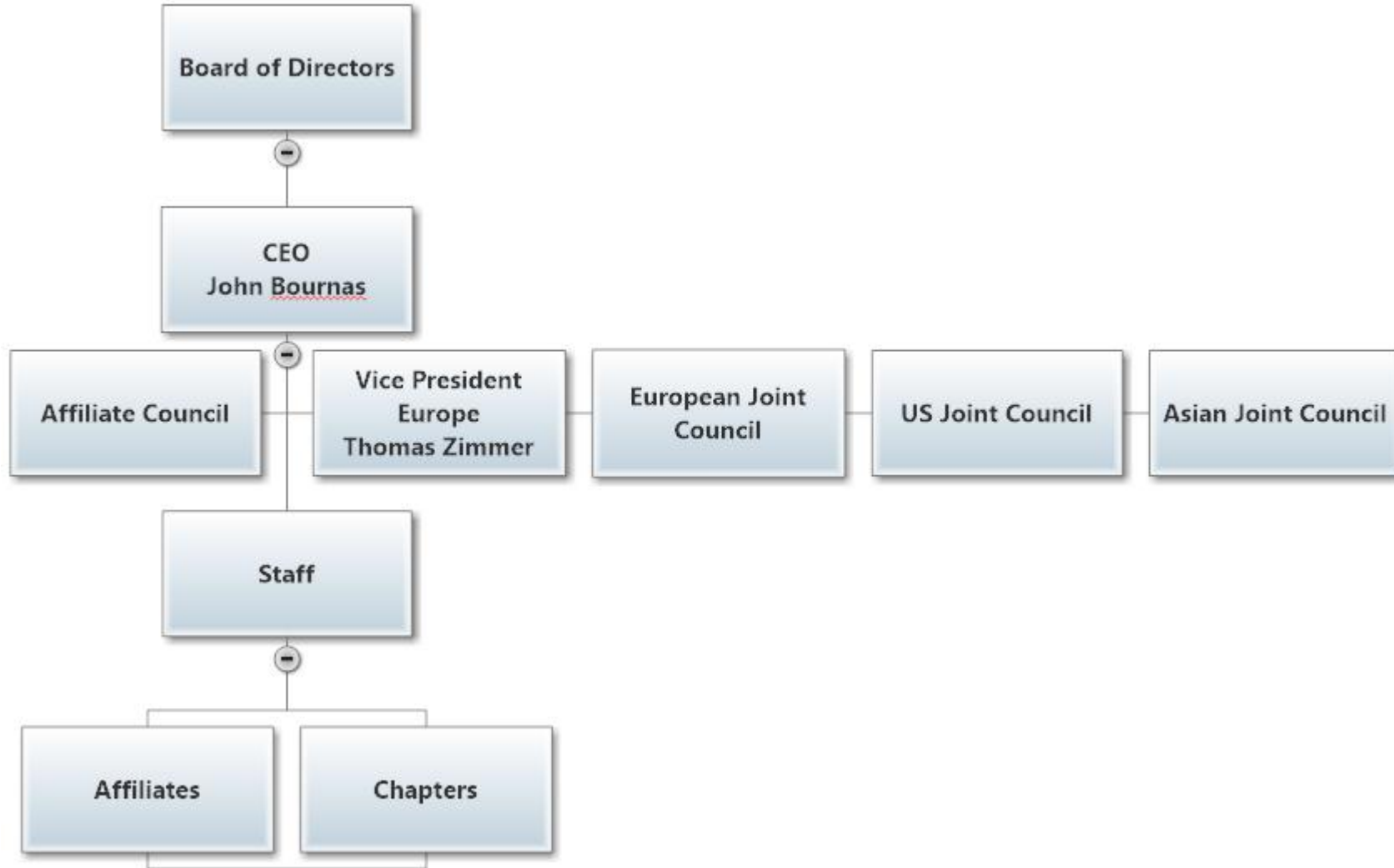
GAMP (Good Automation Manufacturing Procedures)

Cleaning

Young Professionals

Sustainability

# ISPE – Organisation



# ISPE – What's in it for me

- **Guidance Documents**

- Baseline Guides
- Good Practice Guides
- Guides
- Handbooks
- PQLI (Product Quality Lifetime Implementation)

- **Pharmaceutical Engineering**

- **Seminars**

- **CoP**

# ISPE – What's in it for me?

## •It is what you make it!!

- Buy guides cheaper
- Seminars to meet people
- Start answering questions in CoPs
- Be on a team writing guides
- Be part of boards

**Anders Widov**  
**Wiphe AB**

**Anders.Widov@Wiphe.se**  
**+46 708 29 41 90**